

**CANADA NICKEL COMPANY—CRAWFORD NICKEL SULPHIDE PROJECT  
CRAWFORD PROJECT - PRESENTATION AND ENGAGEMENT ACTIVITIES  
LIVING SPACE TIMMINS MEETING REPORT**

MEETING INFORMATION	
DATE	September 29 <sup>th</sup> , 2021
TIME	1:00pm to 2:00pm
LOCATION	Videoconference—MICROSOFT TEAMS
PARTICIPANTS	Living Space Timmins
	<input type="checkbox"/> Jason Sereda, Executive Director, Living Space Timmins
CANADA NICKEL	<input checked="" type="checkbox"/> Alexandra Armstrong, Community Relations and Communications Coordinator
FACILITATION	<input checked="" type="checkbox"/> Isaac Gauthier, Facilitator – Transfer Environment and Society (TES)
OBJECTIVES	<input type="checkbox"/> Follow-up on the Crawford Project <input type="checkbox"/> Present the current baseline study results <input type="checkbox"/> Present the Preliminary Stakeholder Engagement Plan <input type="checkbox"/> Discuss and review the Preliminary Stakeholder Engagement Plan and accompanying activities, tools, and schedule
MEETING HOLDER	Canada Nickel Company
AGENDA	<ol style="list-style-type: none"> <li>1. Introductory Roundtable</li> <li>2. Canada Nickel and the Crawford Project</li> <li>3. Project Update</li> <li>4. Baseline Studies – Preliminary Results</li> <li>5. Preliminary Engagement Plan</li> <li>6. Preliminary Project Timeline</li> <li>7. Group Discussion</li> <li>8. Next Steps</li> </ol>

## MEETING HIGHLIGHTS

ISSUES AND CONCERNS	
✓ <b>Living Space Timmins</b>	<input type="checkbox"/> Concerns regarding housing access in Timmins, especially single-room rentals, due to the large number of workers required for the project
✓ <b>Living Space Timmins</b>	<input type="checkbox"/> Concerns regarding the displacement of vulnerable citizens with regards to housing access in Timmins

SUGGESTIONS	
✓ <b>Living Space Timmins</b>	<input type="checkbox"/> Canada Nickel should use social and digital media to engage with the community
✓ <b>Living Space Timmins</b>	<input type="checkbox"/> Canada Nickel and Living Space Timmins should partner to address common issues, especially through existing programs, for example Pathways to Potential

FOLLOW-UPS	
✓ <b>Canada Nickel</b>	<input type="checkbox"/> Share the meeting presentation, the Meeting Report, and the Preconsultation Survey

GENERAL COMMENTS	
✓ <b>Living Space Timmins</b>	<input type="checkbox"/> Strong interest in participating in discussions regarding Canada Nickel's labour and employment needs, and its community contributions
✓ <b>Living Space Timmins</b>	<input type="checkbox"/> Recognition of Canada Nickel's ongoing proactiveness regarding early engagement
✓ <b>Living Space Timmins</b>	<input type="checkbox"/> Approval of Canada Nickel's engagement process and activities, and of the project's timeline in reference to the organization's long-term plans

## 1. INTRODUCTION & ROUNDTABLE

Alexandra Armstrong, the Community Relations and Communications Coordinator at Canada Nickel initiates the meeting by inviting the participant to introduce himself, before presenting the consultant from TES. She proceeds with a brief overview of the meeting's objectives and agenda. The participant presents himself and mentions that the organization is a regional service hub and aims to eliminate chronic homelessness in Timmins by 2025.

Ms. Armstrong invites the participant to share his questions and comments freely throughout the presentation. She also mentions that the presentation will be shared electronically after the meeting with the participant along with the meeting report, in addition to an anonymous online survey. For details regarding the presentation, please refer to the Appendix.

## 2. CANADA NICKEL & CRAWFORD PROJECT OVERVIEW

Ms. Armstrong shares a brief overview of Canada Nickel and the Crawford Project. She notes that the Crawford Project itself is planned as a large open-pit mining project, 42 kilometres north of Timmins, along Highway 655. Due to the location of the highway, a partial relocation will be required to access the underlying nickel deposit. The project should begin construction by the mid-2020s, depending on the permitting process. A key feature of Canada Nickel's project is to aim towards a carbon-neutral project

She further mentions that Canada Nickel released the Project's Preliminary Economic Assessment (PEA) in June 2021, with positive results. The rate of return is 16%, which is positive for base metals, and the mine's potential lifetime is about 25 years. The site plan presented is based on the results of the PEA and is currently under review as Canada Nickel prepares its feasibility study. A 70% to 75% adjusted layout should be ready to present in October or November 2021. The project will have a general footprint of 30 km<sup>2</sup>, making it a major mining project, even for the area.

Mr. Dupont mentions that Canada Nickel has other promising deposits in the region, with similar geophysical signatures to the Crawford deposit. As such, the company is potentially looking at a longer mine lifetime, closer to 40 years, if the deposits prove to have the available necessary resources for development.

For more details on the Crawford Project's overview, please refer to the presentation attached in the Appendix.

No questions or comments are raised by the participant.

## 3. BASELINE STUDIES – PRELIMINARY RESULTS

Ms. Armstrong presents the various results gathered during the baseline studies undertaken by Canada Nickel's consultants regarding the following topics:

- Terrestrial field investigations (wildlife)
- Fish habitat
- Geochemical, hydrological, and hydrogeological

As a reminder, baseline studies aim to establish a current environmental and social portrait of the Crawford Project, before its development. It helps assess the scope of the project's future cumulative impacts and an eventual path to its closure.

Concerning the terrestrial and aquatic wildlife baseline studies, the assessments were undertaken by Woods and included sampling in the North Driftwood River and West Buskegau River. No species at-risk were identified in the area, even though it is within the southern range of the woodland caribou. One species of special concern was identified in the area, the Olive-sided Flycatcher, although no nesting sites were identified.

Regarding the geochemical, hydrological, and hydrogeological assessments, these were undertaken by Golder. One of the main highlights is that the geochemical analysis confirmed that the ore and waste rock are non-acid generating, due to the local geological signature (low sulphide). Flow and quality monitoring stations have also been installed in the North Driftwood River and West Buskegau River systems. She adds that the hydrogeological studies will begin next week. For further details regarding the baseline studies results, please refer to the presentation available in the Appendix.

No questions or comments were raised by the participants.

#### 4. PRELIMINARY ENGAGEMENT PLAN & GROUP DISCUSSION

Ms. Armstrong presents the proposed guidelines, activities, engagement tools and schedule of the stakeholder engagement process. She reiterates that the participant’s feedback from the engagement questionnaire shared in June 2021 confirmed and guided the Preliminary Engagement Plan being presented now while adding that the meeting’s main objective is to allow participants to review, comment, and ultimately approve the Plan.

For more details regarding the various guidelines, activities, engagement tools and schedules, please refer to the presentation available in the Appendix.

QUESTIONS AND INTERVENTIONS		ANSWERS
<b>Q &amp; I 1</b>	<p>Mr. Gauthier asks the participant if it is unusual for a proponent to engage early in a project with local stakeholders such as the organization he represents.</p> <p>Ms. Armstrong asks the participant if he agrees with Canada Nickel’s proposed engagement approach.</p> <p>Ms. Armstrong mentions that the project will indeed be a very large operation, with several hundred workers during the construction and production phases. She adds that this will certainly impact housing in part because Canada Nickel may have to bring external workers. As such, Canada Nickel will work to mitigate these impacts, in partnership with the community.</p>	<p>The participant mentions that this is the first time a proponent approached Living Space Timmins this early for a project. He adds that the organization has worked with Newmont on specific housing and homelessness prevention projects in the community.</p> <p>The participant mentions that he agrees with the engagement approach. As for the project, its large size and the number of workers needed for such a project will likely result in housing issues. Housing access is a concern within the community, especially for single-room rentals.</p>
<b>Q &amp; I 2</b>	<p>Regarding Canada Nickel’s proposal for an open house event, the participant mentions that these events are used in the community, although their success has been underwhelming. He suggests that Canada Nickel instead use social and digital media to reach out to the community.</p> <p>Regarding Ms. Armstrong’s question, the participant agrees that Canada Nickel should focus on being involved in larger public events for its engagement.</p>	<p>Ms. Armstrong thanks the participant for his feedback and asks if Canada Nickel should rather focus on participating in existing committees or community events.</p>

QUESTIONS AND INTERVENTIONS	ANSWERS
<p><b>Q &amp; 13</b></p> <p>Regarding the proposal of holding topic-specific committees, the participant agrees with the use of smaller working groups, as this approach is particularly effective with the Indigenous members of the community.</p> <p>The participant mentions that he would have an interest in participating in the community contribution committee and the employment and training committee. He adds that Living Space Timmins has an existing program called Pathways to Potential, in which it engages with community members that use the organization's services to facilitate a progressive return to the workforce. He adds that the program aims to build basic skills and encouraging social inclusion to remove a "us vs them" mentality. As such, he believes Canada Nickel and Living Space Timmins could work together further along with the project's development, as the program is still in the planning stages.</p>	<p>Ms. Armstrong thanks the participant for his feedback and asks him if he would be interested in participating in one or a few of the committees.</p> <p>Ms. Armstrong strongly agrees with the participant's proposal and mentions that since the project's construction phase is not expected to begin before 2025-2026, they have time to plan their collaboration.</p>
<p><b>Q &amp; 14</b></p> <p>The participant comments that he approves of Canada Nickel's proposed engagement approach. He believes that the project's timeline fits well with Living Space Timmins' long-term goals with regards to housing and homelessness prevention and agrees that collaboration with Canada Nickel would be positive.</p> <p>The participant further mentions that the housing issue is of critical concern to the community and wants to ensure that new workers that come to the community do not displace current</p>	<p>Ms. Armstrong agrees with the participant and thanks to him for his feedback.</p> <p>Ms. Armstrong further agrees on the importance of housing and mentions that Canada Nickel has already been in touch with the Cochrane District Social Services Administration Board and the Cochrane District Social Planning Council to discuss this important issue.</p> <p>Ms. Armstrong shares her support for the organization's goals and mentions that Canada Nickel will look to work with Living Space Timmins to facilitate mutual objectives.</p>

QUESTIONS AND INTERVENTIONS		ANSWERS
	<p>renters within the limited housing availability.</p> <p>The participant acknowledges Canada Nickel's outreach to these two organizations. He adds that eventually, Living Space Timmins will look to provide its members with specific training in construction in partnership with Habitat for Humanity. The goal is to develop a program where members will work on building houses which they will eventually own, as is done elsewhere in the country.</p>	
<b>Q &amp; I 5</b>	<p>Mr. Gauthier asks the participant what would be his preference regarding the upcoming Initial Project Description Meetings scheduled in November 2021, specifically if he prefers to hold a formal meeting or if he prefers to simply be informed through other means.</p>	<p>The participant mentions that he is comfortable with both, but that a formal meeting usually allows for more information to be shared.</p>

## 5. NEXT STEPS

Ms. Armstrong presents the next steps regarding the Crawford Project, whereas Canada Nickel will share the presentation and meeting report along with a feedback survey. From the results and comments, the team will finalize the Stakeholder Engagement Plan, and continue to engage with local Indigenous groups and the community, as the project moves forward, and its design becomes more definitive.

She adds that the next meeting will be held somewhere in October or November to share the information to be included in the Initial Project Description that will eventually be sent to the Impact Assessment Agency of Canada.

She then thanks the participants for their time and invites them to reach out to the team for any comments or questions. She adds that Canada Nickel's new office in Timmins is also available if people want to drop by and have a chat.

# APPENDIX I PRESENTATION



**CANADA NICKEL**  
COMPANY

# Canada Nickel – Crawford Project

*Delivering the Next Generation  
of Nickel Sulphide Projects*

September 2021







# Cautionary Statements & Disclaimer

This Presentation contains certain information that may constitute "forward-looking information" under applicable Canadian securities legislation about Canada Nickel Company Inc. ("CNC"). Forward-looking information includes statements about strategic plans, including future operations, future work programs, capital expenditures, discovery and production of minerals, price of nickel, timing of geological reports and corporate and technical objectives. Forward-looking information is necessarily based upon a number of assumptions that, while considered reasonable, are subject to known and unknown risks, uncertainties, and other factors which may cause the actual results and future events to differ materially from those expressed or implied by such forward-looking information, including the risks inherent to the mining industry, adverse economic and market developments. There can be no assurance that such information will prove to be accurate, as actual results and future events could differ materially from those anticipated in such information. Accordingly, readers should not place undue reliance on forward-looking information. All forward-looking information contained in this Presentation is given as of the date hereof and is based upon the opinions and estimates of management and information available to management as at the date hereof. CNC disclaims any intention or obligation to update or revise any forward-looking information, whether as a result of new information, future events or otherwise, except as required by law.

This Presentation has been completed by CNC. Certain corporate projects referred to herein are subject to agreements with third parties who have not prepared, reviewed or approved this Presentation. The Presentation is not intended to reflect the actual plans or exploration and development programs contemplated for such projects.

Any forward-looking statement speaks only as of the date on which it is made and, except as may be required by applicable securities laws, CNC disclaims any intent or obligation to update any forward-looking statement, whether as a result of new information, future events or results or otherwise. Although CNC believes that the assumptions inherent in the forward-looking statements are reasonable, forward-looking statements are not guarantees of future performance and accordingly undue reliance should not be put on such statements due to the inherent uncertainty therein.

The scientific and technical information contained in this Presentation has been reviewed by Steve Balch, P. Geo, (VP Exploration) and a Qualified Person within the meaning of National Instrument 43-101.

## **Foreign Exchange Assumptions**

All amounts discussed herein are denominated in CAD dollars unless otherwise specified.



- Introductory Roundtable
- Canada Nickel and the Crawford Project
- Project Updates
- Baseline Studies – Preliminary Results
  - Terrestrial
  - Fish Habitat
  - Geochemical, Hydrological & Hydrogeological
- Presentation - Preliminary Engagement Plan
  - Proposed Guidelines, Tools & Activities
  - Timeline
  - Committee
- Group Discussion
- Next Steps



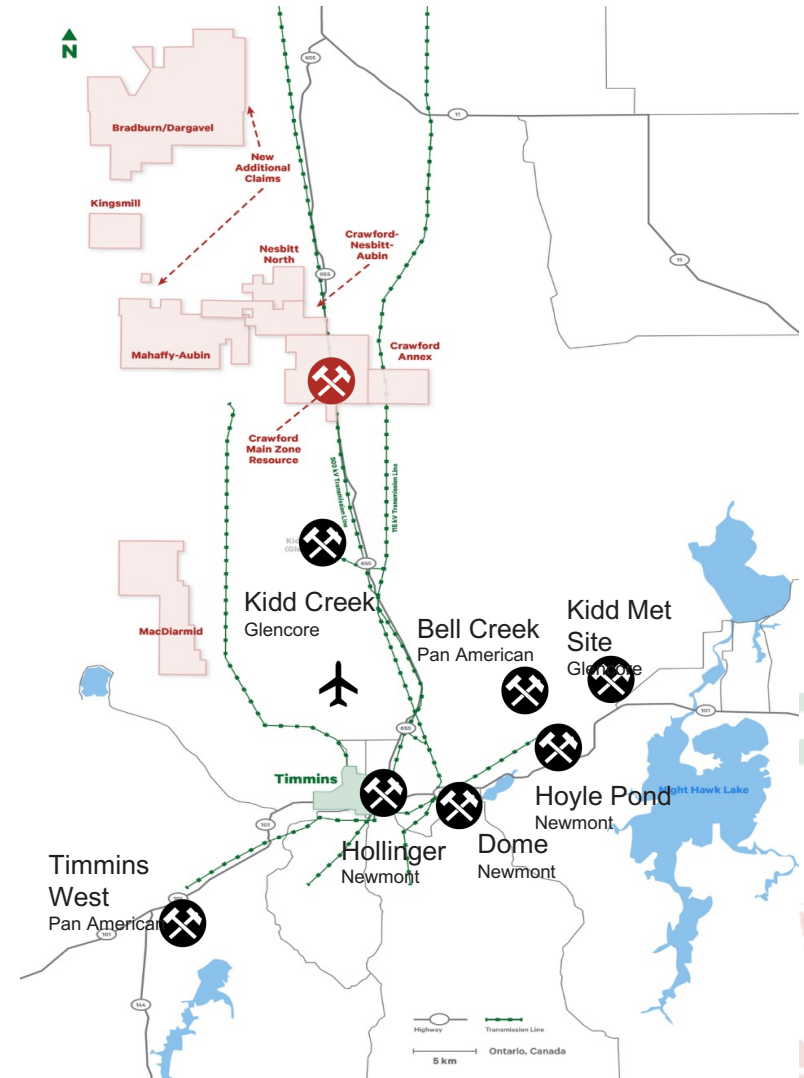
# Canada Nickel and the Crawford Project



**CANADA NICKEL**  
COMPANY

Canada Nickel has full ownership of the Crawford Nickel Project

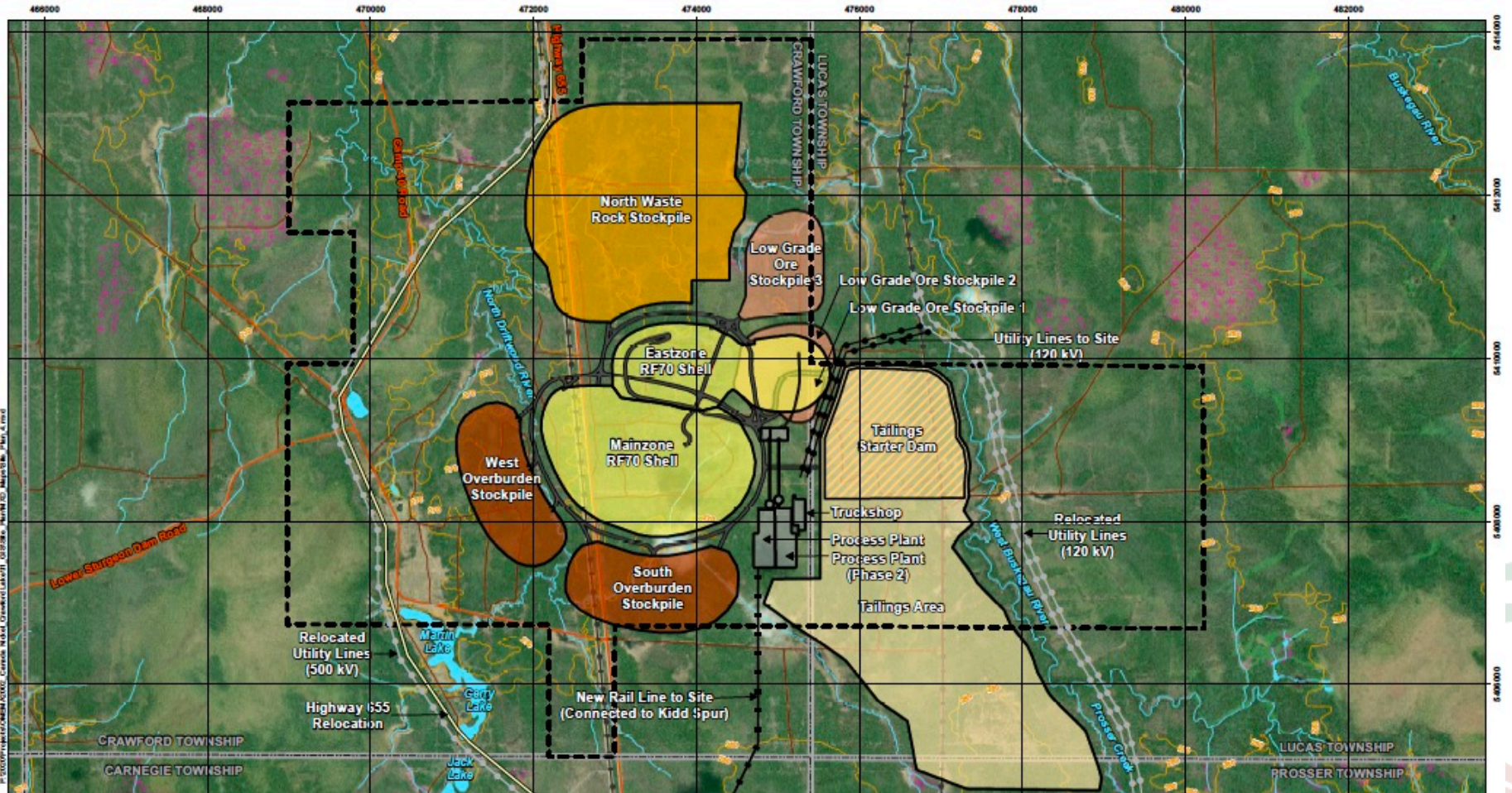
- ✓ **Proposed open pit nickel mine located north of Timmins**
- ✓ **Plans to take advantage of:**
  - Nearby existing infrastructure
  - Skilled local workforce
  - Natural ability for waste rock and tailings to capture and store CO<sub>2</sub>
- ✓ **Positive Preliminary Economic Assessment Results**
  - 16% after-tax internal rate of return (IRR)
  - Expected to be in the top 5 nickel sulphide operations by production globally
  - 25-year mine life
  - Net Present Value of US\$ 1.2 billion



# Preliminary Site Layout



**CANADA NICKEL**  
COMPANY



**LEGEND**

Township Boundary	Contours (10 m interval)	Property Boundary	Waste Rock Stockpile (WRS)	New Rail Line to Site
Utility Line (hydro line)	Waterbody	Open Pit	Overburden Stockpile (OVB)	Highway 656 Relocation
Primary Road / Highway	Watercourse	Access/Haul Road	Low Grade Ore Stockpile	Utility Line to Site (120 kV)
Secondary Road (recourse road)	Wetland	Tailings Area Starter Dam	Process Plant and Truck Shop Area	Relocated Utility Line (120 kV and 500 kV)
		Tailings Area		

NOTES:  
- Topographic map information extracted from Land Information Ontario (MRO2) Queen's Printer for Ontario, 2016/05/02  
- Preliminary site plan data extracted from drawing "Assessing Site Plans May 13-14" 154945-0000-G-001 Rev02  
- Aerial imagery extracted from ESRI ArcGIS Online image service, source date is May 2019.  
Datum: NAD83  
Projection: UTM Zone 17N

	<b>CRAWFORD NICKEL - COBALT SULPHIDE PROJECT</b>	
<b>Preliminary Site Plan Layout</b>		
PROJECT N°: OMEMA2002	FIGURE:	
SCALE: 1:44,000	DATE: June 2021	



## TERRESTRIAL FIELD INVESTIGATIONS

- ✓ Mammals recorded during aerial surveys: **Moose, Beaver, Otter, Wolf, Marten, Hare, and Lynx**
- ✓ **No Species at Risk confirmed during targeted surveys.** The site is located within the range of Woodland Caribou, but no Caribou were observed during field studies this year
- ✓ The **Olive-sided Flycatcher**, which is a Special Concern bird species, was recorded during vegetation surveys but there was **no evidence that the species was breeding locally**



# Preliminary Baseline Study Results



**CANADA NICKEL**  
COMPANY

## FISH HABITAT AND COMMUNITY SURVEYS

- ✓ Sampling completed within the **North Driftwood River** and **West Buskegau River** catchments (ponds, streams and lakes)
- ✓ Mostly **forage / baitfish** community present in the ponds and river, typical of Northern Ontario
- ✓ Large bodied species caught: **Northern Pike, White Sucker and one juvenile Burbot**
- ✓ Future Fall 2021 sampling will include benthic invertebrates (bottom insects), sediment quality and fish community and tissue sampling



# Preliminary Baseline Study Results



**CANADA NICKEL**  
COMPANY

## GEOCHEMICAL

To Date:

Ore and Waste Rock  
Characterization – initial results  
indicate **non-acid generating**

Plan:

Characterization of tailings and  
process water

Suitability of soil removed  
during mine development for  
reclamation purposes

## HYDROLOGICAL

To Date:

Flow and quality monitoring  
stations installed on **North  
Driftwood** and **West Buskegau  
River systems**

Plan:

Characterization of seasonal  
flow conditions in nearby  
creeks and rivers

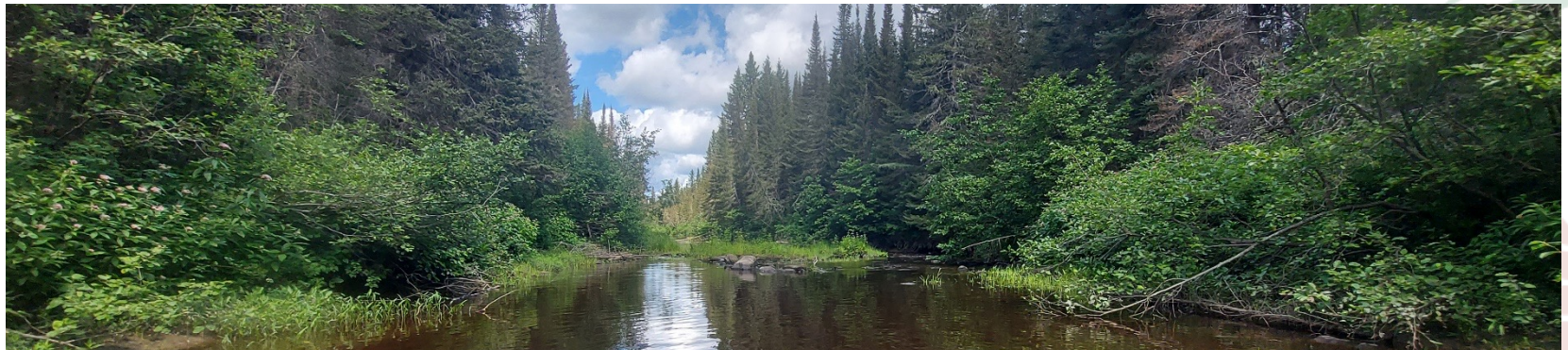
## HYDROGEOLOGICAL

*Initiation in Fall 2021*

Plan:

Characterization of  
groundwater flow conditions  
and quality in soil and bedrock

Connections to be drawn  
between ground and surface  
water





## CANADA NICKEL'S ENGAGEMENT GUIDELINES

- ✓ **Early, ongoing and proactive engagement** that is tailored to the community's interests and expectations
- ✓ Stakeholders are engaged by proximity to the project and **provided opportunities to obtain information and share feedback**
- ✓ Sharing of **public, nuanced, and summarized project information** that transparently **addresses issues, concerns, opportunities, and solutions**
- ✓ Project decisions taken per **feasibility** and **regulatory** requirements, in addition to **Indigenous** and **stakeholder** feedback
- ✓ **Obtaining a plurality of perspectives** from the community by reaching out to groups not often involved in mining projects





Canada Nickel is considering the use of the following engagement tools, per the feedback obtained in the June/July questionnaire:



**Surveys & Meeting Reports (following each meeting)**



**Project Website**



**Community Meeting (Open House)**



**Quarterly Newsletters**



**Ongoing Communications (email, telephone, office)**



**Thematic Committees and Small Group Meetings**



Due to the complex nature of a large scale, open pit mining project, Canada Nickel is considering the creation of work committees to address specific topics related to the project with relevant stakeholders within the community.

## **Potential topics:**

- ✓ Community Contribution
- ✓ Environmental Impact Management (tailings management, water quality, etc.)
- ✓ Labour & Training

Does the idea seem relevant to you?



# Planned Engagement Schedule (2021 - 2022)



**CANADA NICKEL**  
COMPANY

**October/  
November  
2021**

**November/  
December  
2021**

**Mid 2022**

**2022**

**Initial Project  
Description  
(IPD)  
Meetings**

**\*Committee  
Creation &  
1st Meeting**

**\*\*Detailed  
Project  
Description  
Meetings**

**Impact  
Assessment  
Meetings**

**Discuss:**

- Project Design
- Anticipated Impacts
- Planned Mitigation

**Goal:**

- Create committees per community feedback
- Establish participants
- Hold 1<sup>st</sup> Meeting

**Discuss:**

- Issues identified by Agency (IAAC), following IPD and federal consultations
- Proponent's response to those issues

**To be defined  
early 2022**

\*Activities to be held per relevance and community interest

\*\*Activity to occur post Agency-led consultation on IPD





Per the information shared today, do you have any comments or concerns regarding:

- ✓ The Crawford Project?
- ✓ The Baseline studies/results?
- ✓ The Preliminary Engagement Plan and its proposed tools, activities and schedule?
- ✓ The potential creation of committee(s)?

Do you feel Canada Nickel is sufficiently proactive in reaching out to the community for its input? Is it doing too little, or too much?



Following today's meeting, Canada Nickel will:

- ✓ Share with you an Engagement Survey and Meeting Report
- ✓ Finalize the Stakeholder Engagement Plan
- ✓ Prepare a Preliminary Initial Project Description (IPD)
- ✓ Reach out to Indigenous groups and community stakeholders for feedback on the Crawford Project's design, anticipated impacts, and proposed mitigation, per the information in the Preliminary IPD





**CANADA NICKEL**  
COMPANY

# FUTURE QUESTIONS OR COMMENTS ?

**PLEASE CONTACT**

ALEXANDRA ARMSTRONG, COMMUNITY RELATIONS  
AND COMMUNICATIONS COORDINATOR

[community@canadanickel.com](mailto:community@canadanickel.com)

705-363-7322

[www.canadanickel.com](http://www.canadanickel.com)





**CANADA NICKEL**  
COMPANY

---

# APPENDIX



# Board and Management Team



**CANADA NICKEL**  
COMPANY

<b>David Smith</b> <i>Director</i> P.Eng., C.Dir.	<ul style="list-style-type: none"><li>• Senior VP, Finance and CFO of Agnico Eagle Mines Limited;</li><li>• Chartered Director, Director of Sprott Resource Holdings</li></ul>	<b>Mark Selby</b> <i>Chairman, CEO</i> B.Comm.	<ul style="list-style-type: none"><li>• Previous CEO of Royal Nickel Corporation</li><li>• Corporate development, strategy, business planning and market research Executive with Quadra Mining and Inco</li><li>• Nickel market expert</li></ul>
<b>Francisca Quinn</b> <i>Director</i> M.Sc.	<ul style="list-style-type: none"><li>• Co-founder and President of Quinn &amp; Partners Inc., a recognized advisory firm advancing sustainability in business and capital markets;</li><li>• Previously with Carbon Trust and WSP Global</li></ul>	<b>Wendy Kaufman</b> <i>CFO</i> CPA, CA	<ul style="list-style-type: none"><li>• &gt;25 years of experience leading mining companies in project finance, capital structure, capital markets, accounting and internal controls, tax, financial reporting and public disclosure; completed \$4 billion finance for Cobre Panama</li></ul>
<b>Jennifer Morais</b> <i>Director</i> BA, MBA, CFA	<ul style="list-style-type: none"><li>• &gt;20 years as senior executive in private equity, alternative finance, mining finance and management consulting; previously with TPG Capital, CPPIB, OMERS, Hatch and CIBC</li></ul>	<b>Steve Balch</b> <i>VP, Exploration</i> P.Geo.	<ul style="list-style-type: none"><li>• Geophysicist with 35 years experience specializing in Ni-Cu-PGE deposits including for Inco Limited in the Sudbury Basin and Voiseys Bay</li><li>• Active in developing geophysics technology used in exploration globally</li></ul>
<b>Kulvir Singh Gill</b> <i>Director</i> B.Comm., ICD.D	<ul style="list-style-type: none"><li>• 20 years of experience in innovation and sustainability in mining; lead innovation and growth projects for Fortune 500 clients across the mining, O &amp; G and heavy industrial sectors</li></ul>	<b>John Leddy</b> <i>Senior Advisor, Legal</i> LL.B.	<ul style="list-style-type: none"><li>• Senior Advisor, Legal and Strategic Matters at Karora Resources Inc. (formerly RNC Minerals);</li><li>• Over 20 years' experience as a business lawyer and former Partner at Osler</li></ul>
<b>Mike Cox</b> <i>Director</i> B.Sc., MBA	<ul style="list-style-type: none"><li>• Managing Partner at CoDa Associates; previously head of Vale UK and Asian refineries following over 30 years in senior leadership roles in Base Metals with Inco and Vale</li></ul>	<b>Pierre-Philippe Dupont</b> <i>VP, Sustainability</i> M.Sc.	<ul style="list-style-type: none"><li>• &gt;15 years of experience in successfully obtaining environmental, community stakeholder and First Nation approvals for mining projects, including permitting Dumont Nickel and Canadian Malartic; former Director of Sustainability at Glencore</li></ul>
<b>Russell Starr</b> <i>Director</i> MA, MBA	<ul style="list-style-type: none"><li>• Previously in senior roles with RBC Capital Markets, Scotia Capital, Orion Securities, and Blackmont; SVP and Director of Cayden Resources (acquired by Agnico for \$205M)</li></ul>	<b>Christian Brousseau</b> <i>Project Director</i> P.Eng., MBA, ing.	<ul style="list-style-type: none"><li>• 30 years of experience with engineering, design and construction in mining, including &gt;6 years as project Director for the Dumont Nickel Project, three years as the Engineering and Construction Manager for Detour Gold</li></ul>





**CANADA NICKEL**  
COMPANY

---

# Crawford Project – Design and Features



# Current Downstream Path to Stainless Steel

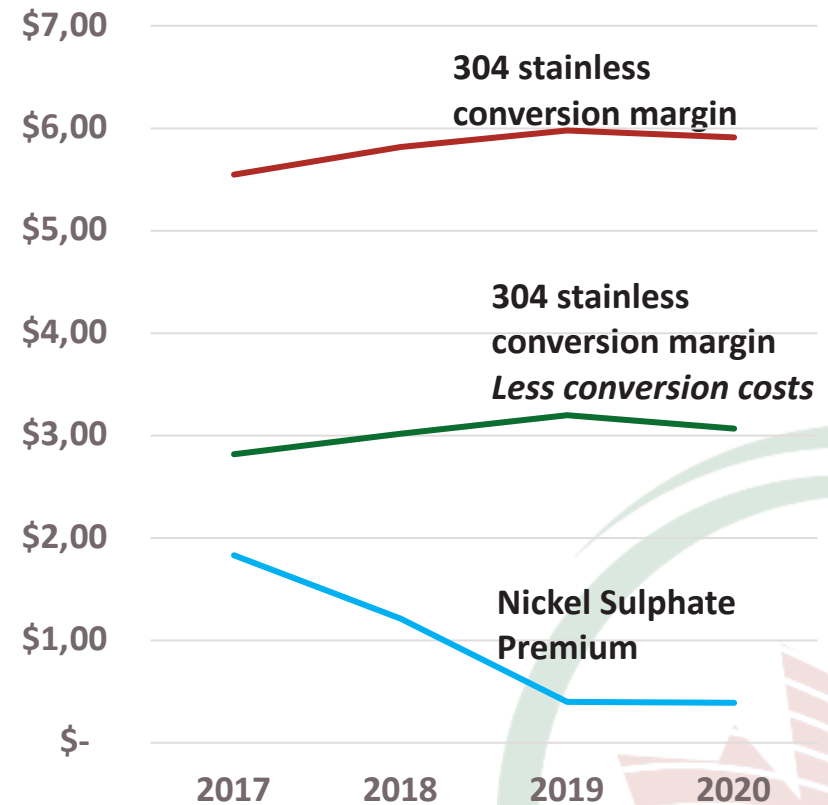
## Future Path Likely to Include Path to EV



**CANADA NICKEL**  
COMPANY

- Nickel, iron and chromium are three key alloying metals in the production of stainless steel, which makes Crawford products suitable feeds
- Stainless steel pricing delivers consistent premiums available in the United States *and MUCH higher and sustained than nickel sulphate*
- Based on analysis by CRU, Kingston Process Metallurgy Inc. and Steel and Metals Market Research, the Company is utilizing payability of:
  - Nickel 91%, Iron 71%, Chrome 43% which still provides sufficient incentive for the construction of a local stainless steel mill which would also produce additional nickel pig iron products based on the nickel/iron mix of the feeds
- With rapidly increasing demand from the EV market, processing options to deliver nickel units to the EV supply chain will likely be included in the feasibility study allowing Co and PGM contained value to be captured and add further value to the project

US Stainless Conversion Margins  
(US\$/lb Nickel) vs  
Nickel Sulphate Premiums



Source: CRU, Canada Nickel Analysis

# Nickel Demand: Leader Among Metals

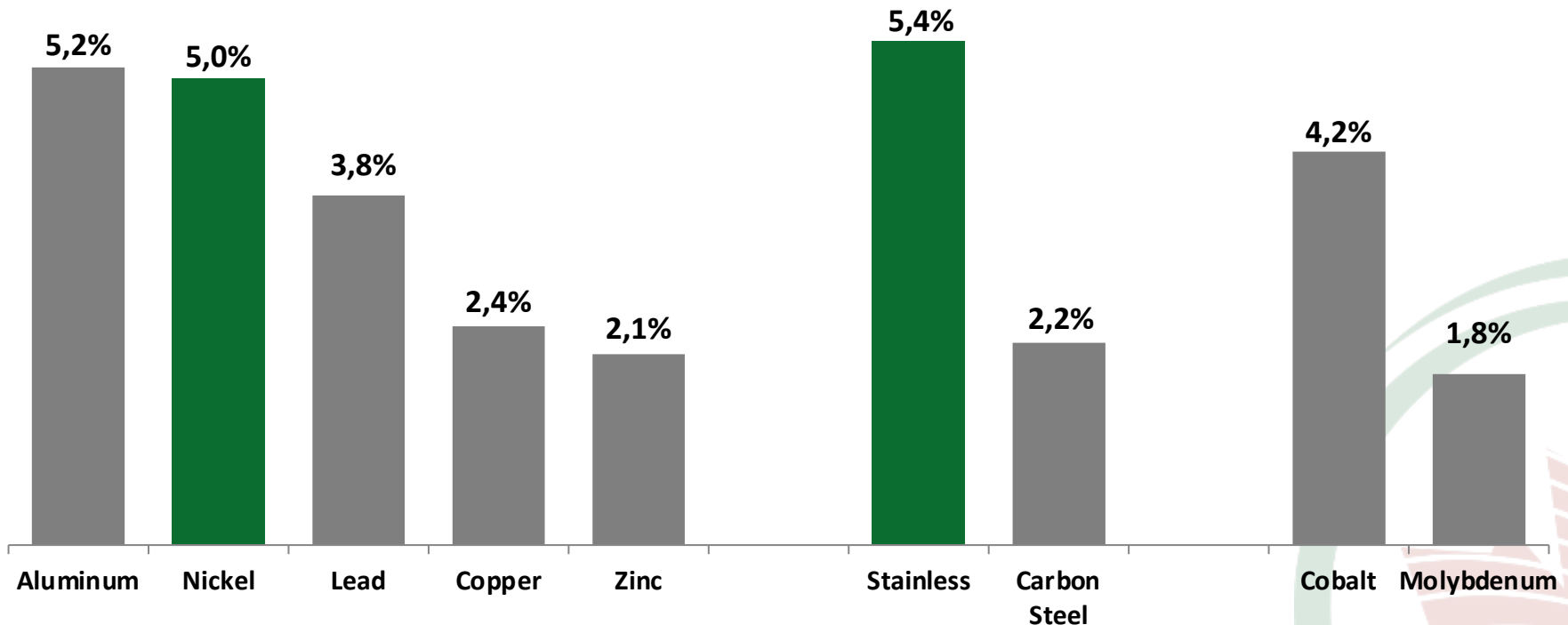


**CANADA NICKEL**  
COMPANY

**Nickel demand a leader among metals over the last decade driven by continued strong growth in stainless steel with little contribution from electric vehicles**

**Nickel potentially entering a super cycle; occurs every 15-20 years.**

**Base Metals & Other Metals Demand (2007 - 2017)**



Source: Macquarie

[www.canadanickel.com](http://www.canadanickel.com)

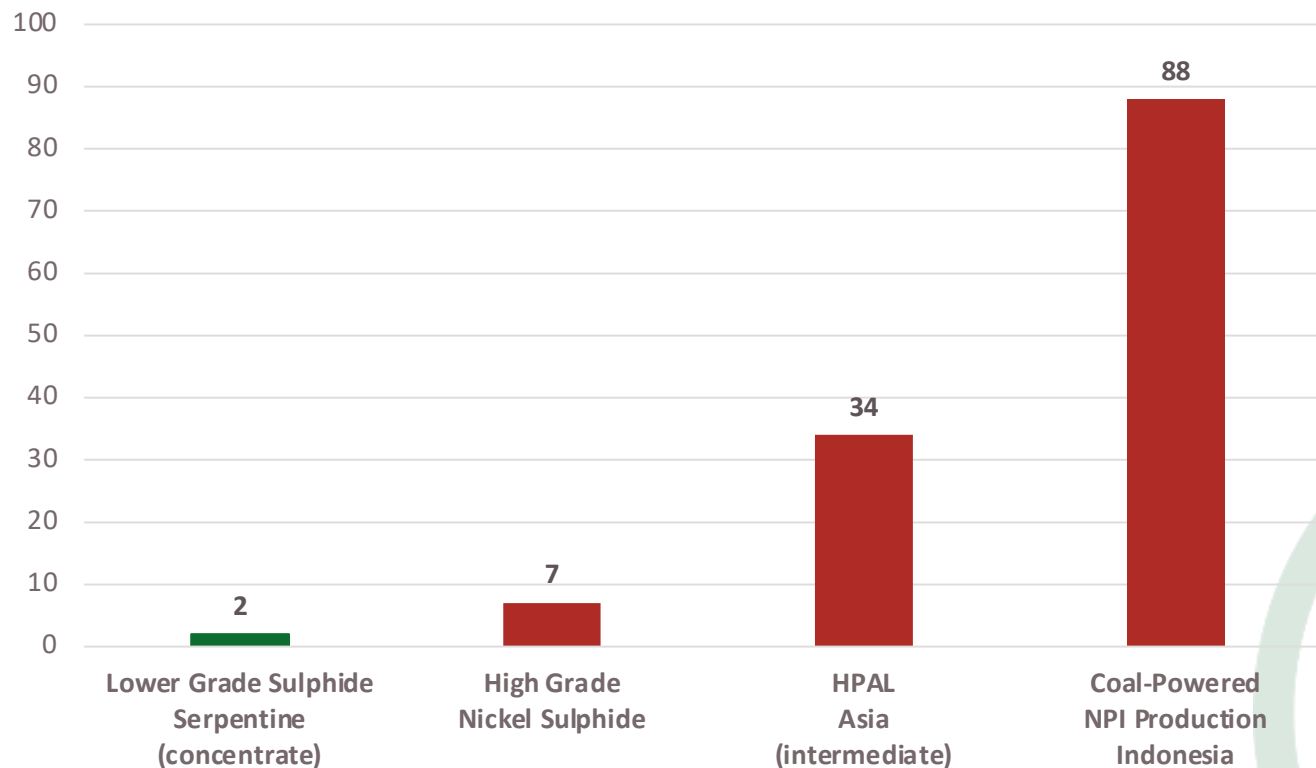
# Tesla: “Please mine more nickel...”



**CANADA NICKEL**  
COMPANY

“...please mine more nickel... Tesla will give you a giant contract for a long period of time if you mine nickel efficiently and in an environmentally sensitive way.” – *Elon Musk, Co-Founder and CEO, Tesla Earnings Call July 22, 2020*

## Estimated Carbon Footprint (tonnes CO<sub>2</sub>/tonne of Nickel produced) Selected Types of Nickel Production – Existing Projects/Producers



Source:  
WoodMac Nickel Industry Costs, Canada Nickel analysis

[www.canadanickel.com](http://www.canadanickel.com)

# Electric Vehicles to Drive Significant Demand Growth

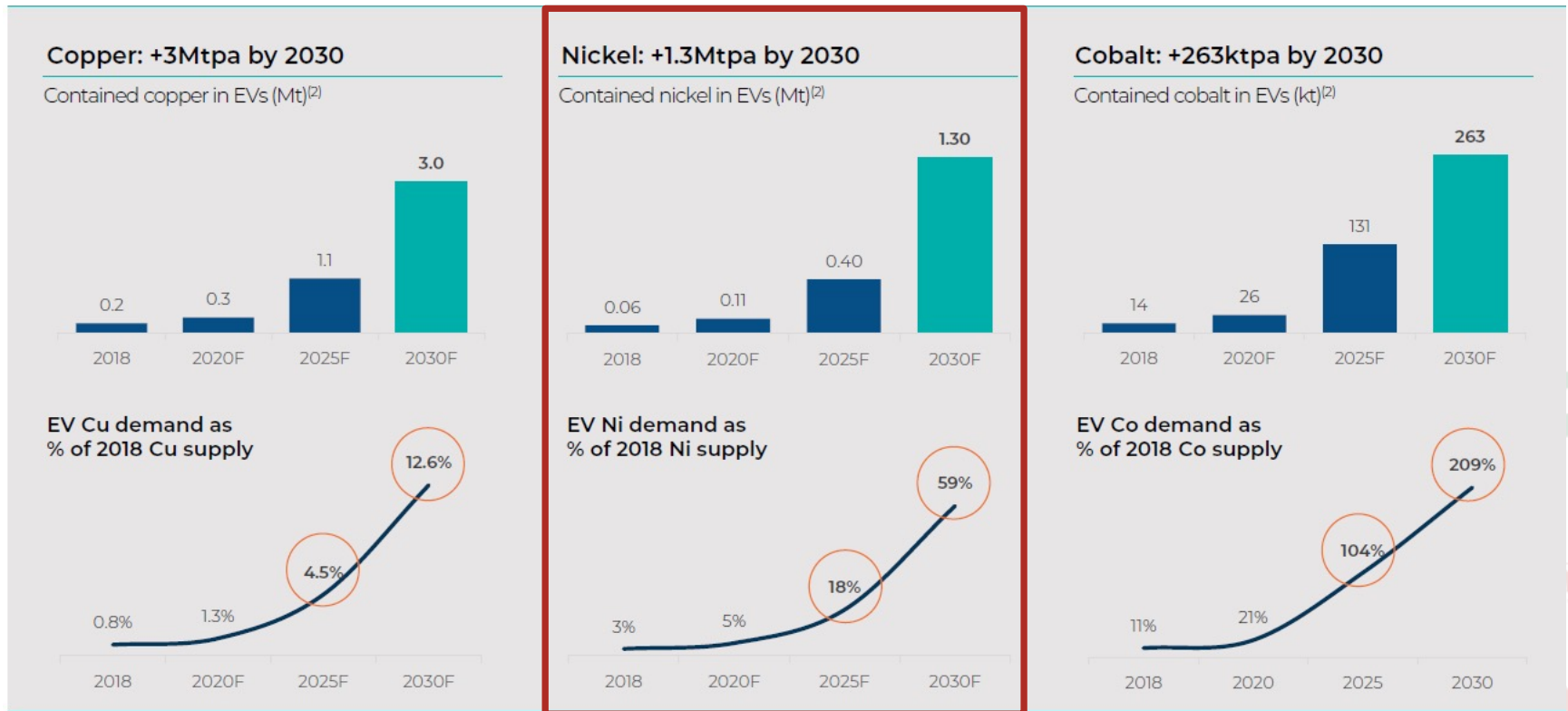


**CANADA NICKEL**  
COMPANY

## Glencore presentation highlight massive growth expected in nickel demand. *Tesla 3TW of annual batteries needs 1+ Mtpa alone!*

Electrification of transport relies on the large scale replacement of ICE with EVs

The mobility transition is a major new source of material demand: >140M EVs forecast on the road by 2030<sup>(1)</sup>



Bank of America Merrill Lynch  
2019 Global Metals, Mining & Steel Conference

Source: (1) BNEF Long-Term Electric Vehicle Outlook 2018. (2) Glencore estimates, Wood Mackenzie, CRU, BNEF. Does not include the copper, nickel or cobalt required for other parts of the EV supply chain including charging infrastructure, energy storage systems, grid

GLENCORE



## Key technologies are being explored to potentially develop a Zero-Carbon footprint operation

### Mining

- ✓ Electric rope shovels and trolley trucks as a power sources (wherever possible)
- ✓ Ambient CO<sub>2</sub> absorption through natural mineral carbonation process of the waste rock and tailings (exact amount and rate of absorption at Crawford will be analyzed in the upcoming studies)

### Milling

- ✓ Large scale processing of lower grade sulphide ores utilizes lots electricity - proximity to local hydroelectricity provides the potential to minimize carbon emissions

### NetZero Metals - Nickel-Cobalt Concentrate Processing

- ✓ Utilizing natural gas as a reductant, with the off-gases captured and re-routed to allow the CO<sub>2</sub> be captured by the waste rock and tailings
- ✓ Off-gases will again be captured and treated to ensure CO<sub>2</sub> and SO<sub>2</sub> emissions are minimized



**CANADA NICKEL**  
COMPANY

---

# FIRST NATION PARTNERSHIPS

[www.canadanickel.com](http://www.canadanickel.com)



# First Nation Partnerships



**CANADA NICKEL**  
COMPANY

Canada Nickel has entered into Memorandum of Understandings (MOUs) with Taykwa Tagamou Nation, Matachewan First Nation and Mattagami First Nation.

Discussions are currently underway to establish collaborative frameworks with our Indigenous partners throughout the project.

TAYKWA TAGAMOU



NATION







**CANADA NICKEL**  
COMPANY

---

# FEDERAL IMPACT ASSESSMENT PROCESS

[www.canadanickel.com](http://www.canadanickel.com)





- ✓ The Crawford Project will likely fall under the post-Bill C-69 federal Impact Assessment (IA) Process:
  - Federal threshold of 5000+ tonnes daily
  - Potential encroachment in watercourses
- ✓ New regulatory body: Impact Assessment Agency of Canada (IAAC)
- ✓ Canada Nickel will thus be required to do a rigorous assessment of the Crawford Project's environmental but also socio-economical impacts
- ✓ Proactive Indigenous and community engagement will be key in identifying these impacts and the relevant mitigation measures

# Key Project Milestones / Timeline



**CANADA NICKEL**  
COMPANY

